



"Little girl, I tell you to get up!"

# The Catholic Parish of The Sacred Heart, Darwen

**St. Joseph's Church**  
Bolton Rd

**Parish Office**  
Church House  
370 Blackburn Road  
Darwen, BB3 0AA  
01254 702525

e-mail: [admin@darwencatholic.org.uk](mailto:admin@darwencatholic.org.uk)  
newsletter: [news@darwencatholic.org.uk](mailto:news@darwencatholic.org.uk)

**St Edward's Church**  
Blackburn Rd

**Priest's Residence**  
St. Joseph's Presbytery  
149 Bolton Road  
Darwen, BB3 2PG  
01254 702026

[www.darwencatholic.org.uk](http://www.darwencatholic.org.uk)

**13<sup>th</sup> Sunday Ordinary Time – Year B**

**27<sup>th</sup> June 2021**

**St. Joseph's St. Edward's**

<b>Saturday</b>	<b>6.15 p.m.</b>		<b>Vigil Mass – HAVE YOU BOOKED?</b>
<b>Sunday</b>	<b>9.00 a.m.</b>	<b>11.00 a.m.</b>	<b>Mass – HAVE YOU BOOKED?</b>
Monday	9.15 a.m.		Mass
Tuesday	<b>8.00 p.m.</b>	<b>9.15 a.m.</b>	<b>St Peter &amp; St Paul Mass 9.15am St Edward's</b> <b>St Peter &amp; St Paul Mass 8pm St Joseph's live streamed</b>
Wednesday	9.15 a.m.		Mass
Thursday		9.15 a.m.	Mass
Friday			<b>NO MASS – Y6 St Edward's Tower Walk</b>
<b>Saturday</b>			<b>NO MORNING MASS</b>
	<b>6.15 p.m.</b>		<b>Vigil Mass 14<sup>th</sup> Sunday Ordinary Time– PLEASE BOOK</b>
<b>Sunday</b>	<b>9.00 a.m.</b>	<b>11.00 a.m.</b>	<b>Mass 14<sup>th</sup> Sunday Ordinary Time – PLEASE BOOK</b>



## First Holy Communion

Congratulations to our Parish Group who coped with a series of changes last week, but still enjoyed a very special celebration. Particular thanks go to Fr Michael for stepping in at short notice, and to the 9am congregation who facilitated the occasion in difficult circumstances. Thanks also to the families and volunteers who supported children on the programme. *Some children have had to isolate and will therefore join the 9am Mass with parishioners this week & next.*

### Sunday 27th June St Edward's School St Edward's Church 12.00 Y4 & 1.30 Y3

This week we welcome St Edward's School We pray for them as they continue their Sacramental journey and give thanks for their presence in our community.

## FR BRIAN IS FREE!

Fr Brian is out of isolation and back in routine. He is grateful to everyone for their patience and support. He has not had Covid nor has he been ill. The isolation was a routine requirement due to being in contact with a child who tested positive. All is well!

## Parish Walk – Nature & Industry Combined

After a chilly start, the sun shone on yet another wonderful walk over hill and dale. We are truly blessed with such beauty on our doorstep, and we are constantly reminded of man's ingenuity in harnessing nature in the quest for progress. Well done to everyone who shared this expedition and enjoyed such a wonderful celebration of creation.

## PLEASE BOOK SUNDAY MASS

*Text only - kept 21 days NHS tracing.*

**Saturday 6.15pm: 07772 257315**

**Sunday 9am: 07598 908987**

**Sunday 11am: 07722 889932**

*Lines open Mon-Sat 10-4pm. TEXT:*

**SURNAME - MASS - NO. OF PLACES;**

**e.g. Smith 9am 2 places.**

A simple YES /NO reply will be returned.



## The Return of Fr Michael Winstanley

Thanks to Fr Michael for covering the Masses last week with Fr Brian's sudden isolation. We had plenty of positive feedback from parishioners and indeed from Fr Michael about our welcoming Parish. Fr Michael will be back in Darwen next Saturday 3<sup>rd</sup> July to say the 6.15pm Mass at St Joseph's, as Fr Brian has a pre-planned family



## Euro Championships 2021

England play Germany on Tuesday night. Fr Brian wants to make it clear that in 1966, the ball went over the line!

## Goodbye & Good Luck Miss Donna

After 6 years of dancing at St Edward's Hall, the Donna Fleming Dance Academy has closed. We thank Donna and her associates for all their wonderful work and congratulate the children and young people who have achieved so much from these inspirational classes. We will miss you all.

## Covid Vaccination Bus Darwen Market Square Sunday 27<sup>th</sup> June

1<sup>st</sup> Jab Pfizer For anyone over 18 or over. No eligibility criteria & no appointment necessary.



## Mass Intentions

**Latently Dead:** Richard Tidswell (52 years), Derek Beardsworth, Frank Waddington

**Anniversaries:** Gerry Lucas (1<sup>st</sup> July), Michael Slater

**Other:** Kevin Porter, Eileen Porter, Holy Souls, Alex

Live-Stream St Joseph's



<https://www.churchservices.tv/darwen>

## WEEKLY COLLECTIONS THANK YOU

A/C: TSDT Sacred Heart

A/C no. 40835803

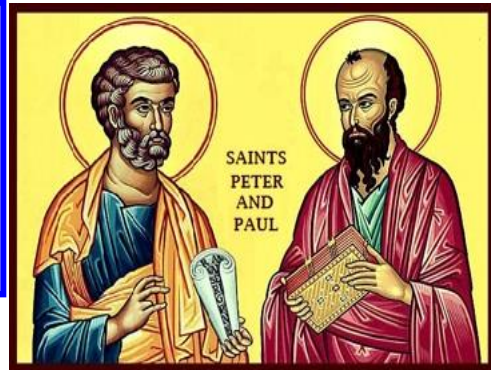
Sort code: 205534 

## Summer Solstice 21<sup>st</sup> June 2021

Have you noticed this week: summer is officially here, but the nights are drawing in!

## Darwen Covid

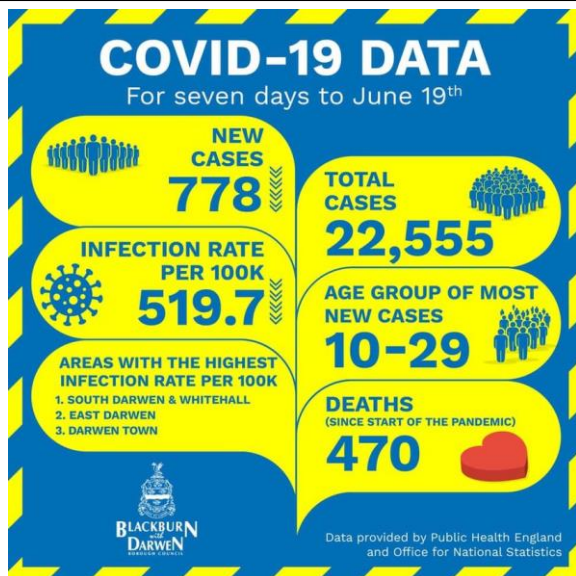
Darwen rates are high!  
Please take care for all the people you love!



## Feast of St Peter & St Paul Tuesday 29<sup>th</sup> June

Mass will be celebrated in both Churches to mark this holy day. Remember the obligation is still suspended during the pandemic.

**St Edward's 9.15am**  
**St Joseph's 8pm**



## SUMMER FAMILY WALKS

(Suitable for school-age upwards)  
ALL WELCOME - ANY BACKGROUND



**Walk 1: Tuesday 27<sup>th</sup> July 10.30 am**

**WITTON PARK ADVENTURE TRAIL**

**Meet 10.30am Witton Arena Entrance BB2 2TP**

This 4 mile walk takes us along the River Darwen through woods and trails to the Wainwright Memorial. The spectacular views and beautiful surroundings make it a perfect picnic stop. We then head for Billinge Hill viewpoint and descend the steps into Big Cover Wood to our destination at the Café & play area.

**Walk 2: Tuesday 10<sup>th</sup> August 10.45 am Darwen Station**

**TRAIN TRIP & JUMBLES JAUNT**

**Meet at Darwen Station Platform 1 & catch 10:56 train to Bromley Cross for 11.08**

We will walk from the station to Jumbles and take a clockwise walk around the reservoir following the woodland & park trails. This is an easy walk on good paths so trainers or wellies will be fine.

We will have a packed-lunch at the picnic area outside the café, with the option of ice-cream or refreshments. There are toilets here and a car-park if anyone wants to meet us here or be collected early. From here it is a mile back to the station & trains are every hour.

**We will aim to catch the 15:11 return train arriving back in Darwen 15:24**

*Adult tickets: £3.90 & children under 15 £1.95*

**Walk 3: Tuesday 24<sup>th</sup> August 10.15 am Darwen Station**

**TRAIN TRIP - RIBBLE RAMBLE & CASTLE CLIMB**

**Meet at Darwen Station Platform 2 & catch 10.25 train to Clitheroe for 10.56**

The day will include a 3-4 mile walk through Brungerley Park and along the banks of the river Ribble, plus a visit to Clitheroe Castle at the top of the hill, which is free apart from the museum. We will have a picnic lunch, a playground park adventure and the all-important café visit if required. Trains are every hour. **We will aim to get the 16:25 train back from Clitheroe arriving back in Darwen 16.55.**

*Adult tickets £5.10 adult return & £2.55 for children under 15.*