



**"A prophet is only despised  
in his own country."**

# The Catholic Parish of The Sacred Heart, Darwen

St. Joseph's Church  
Bolton Rd

St Edward's Church  
Blackburn Rd

**Parish Office**  
Church House  
370 Blackburn Road  
Darwen, BB3 0AA  
01254 702525

e-mail: [admin@darwencatholic.org.uk](mailto:admin@darwencatholic.org.uk)  
newsletter: [news@darwencatholic.org.uk](mailto:news@darwencatholic.org.uk)

**Priest's Residence**  
St. Joseph's Presbytery  
149 Bolton Road  
Darwen, BB3 2PG  
01254 702026  
[www.darwencatholic.org.uk](http://www.darwencatholic.org.uk)


**14<sup>th</sup> Sunday Ordinary Time – Year B**

**4<sup>th</sup> July 2021**

**St. Joseph's St. Edward's**

<b>Saturday</b>	<b>6.15 p.m.</b>		<b>Vigil Mass – HAVE YOU BOOKED?</b>
<b>Sunday</b>	<b>9.00 a.m.</b>	<b>11.00 a.m.</b>	<b>Mass – HAVE YOU BOOKED?</b>
Monday	9.15 a.m.		Mass
Tuesday		9.15 a.m.	Mass
Wednesday	9.15 a.m.		Mass
Thursday			<b>NO MASS</b>
Friday	9.15 a.m.		Mass
<b>Saturday</b>		9.15 a.m.	Mass
	<b>6.15 p.m.</b>		<b>Vigil Mass 15<sup>th</sup> Sunday Ordinary Time– PLEASE BOOK</b>
<b>Sunday</b>	<b>9.00 a.m.</b>	<b>11.00 a.m.</b>	<b>Mass 15<sup>th</sup> Sunday Ordinary Time – PLEASE BOOK</b>



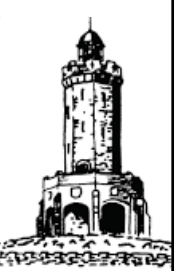
 **PLEASE BOOK SUNDAY MASS**  
Text only - kept 21 days NHS tracing.  
**Saturday 6.15pm: 07772 257315**  
**Sunday 9am: 07598 908987**  
**Sunday 11am: 07722 889932**  
Lines open Mon-Sat 10-4pm. TEXT:  
**SURNAME - MASS - NO. OF PLACES;**  
**e.g. Smith 9am 2 places.**  
A simple YES /NO reply will be returned.



**First Holy Communion**  
Congratulations to St Edward's children who received First Holy Communion last Sunday. They were wonderful! Thanks to their families, school staff and all in the Parish who supported the sacramental journey. This week we welcome three children for First Communion at 9am Mass, who had to isolate on their original date. We pray that this sacred occasion is very special and filled with love and great joy.

**Fr Michael Returns**  
Thanks again to Fr Michael Winstanley who will celebrate the 6.15pm vigil Mass this Saturday evening for Fr Brian. The popularity of Fr Michael is becoming ever-more evident; Fr Brian is NOT jealous! Fr Brian will be celebrating the Sunday morning Masses as usual.

**St Edward's Time Capsule**  
St Edward's School are planning to bury a time capsule in response to these incredible years we have just gone through. This is to be opened in 20 years time. It is not large but please get in touch if you have any suggestions of what might symbolise our experience of the pandemic:  
[admin@darwencatholic.org.uk](mailto:admin@darwencatholic.org.uk)



**St Edward's Year 6 Tower Walk**  
Fr Brian & Fliss, as governors of St Edward's School, assisted with a 6-mile walk to Darwen Tower. Year 6 children have shorter legs, so they gained more steps than the adults, much to the envy of staff! Needless to say, they were all fantastic... and fun... and future stars!  
The Tower is still standing, and the restoration work is another part of history witnessed by these youngsters in their final year of primary school.



**England v Germany Match**  
Let us celebrate the joy and recognise, the wonder of a football game expressing a nation's aspirations.

**Next Parish Walk – Saturday 31<sup>st</sup> July**  
**8-9 miles Yarrow Yomp 10 am start**  
**Meet at The Royal Arms, Tockholes**  
**Outside the Visitors' Centre BB3 0PA**  
Route will be published next week.  
Anyone in need of transport to Tockholes, please let us know and we will arrange car-share, assuming restrictions are lifted by then.



**St Joseph's Year 4 Strawberries**  
Well done to Year 4 children who have successfully grown their own strawberry plants. Their efforts were rewarded this week with ripe, red fruit. In the interest of Quality Control, each child has sampled the fruits of their labour and confirmed that the strawberries were indeed very tasty!



## Mass Intentions

**Lately Dead:** Richard Tidswell (52 years), Derek Beardsworth

**Anniversaries:** Ralph Hughes, Desmond Ardis

**Birthday Anniversaries:** Peter Walsh (1<sup>st</sup> July), Mary Howard (2<sup>nd</sup> July), Winifred Pattinson (7<sup>th</sup> July), Thomas Taylor (8<sup>th</sup> July), Mary-Ellen Taylor (12<sup>th</sup> July), Robert Large (18<sup>th</sup> July)

**Other:** Special Intention

**Live-Stream St Joseph's**   
<https://www.churchservices.tv/darwen>

### Covid Neighbours

We still have a great many people isolated by Covid. Please remember to contact somebody who is on their own, or get in touch if you need help, or if you know someone who may be struggling.

### Covid Review

On 19<sup>th</sup> July we will take instruction from the Diocese on the next steps for Parish activities. It is worth remembering that until the whole world is immunised, nobody is immune!

### WEEKLY COLLECTIONS THANK YOU

A/C: TSDT Sacred Heart

A/C no. 40835803

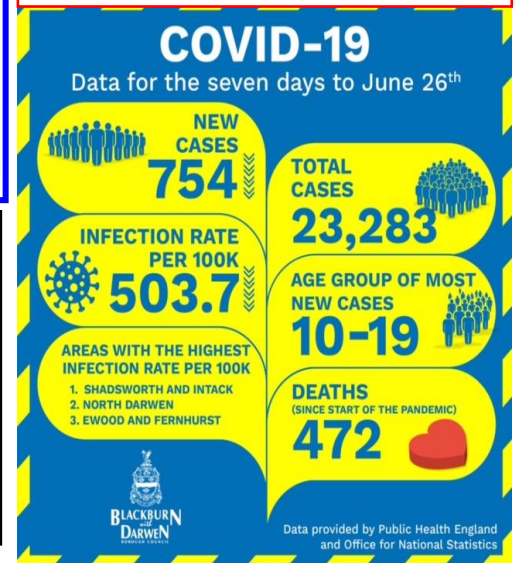
Sort code: 205534 

### St Joseph's Roof

Scaffolding will soon appear again at St Joseph's. This will be to seal the roof over the sacristy. Old buildings have large pockets. Fr Brian likes spending your money!

### STAY SAFE

Darwen is still a Covid hot-spot



## SUMMER FAMILY WALKS

(Suitable for school-age upwards)

ALL WELCOME - ANY BACKGROUND



 Walk 1: Tuesday 27<sup>th</sup> July 10.30 am 

WITTON PARK ADVENTURE TRAIL

Meet 10.30am Witton Arena Entrance BB2 2TP

This 4 mile walk takes us along the River Darwen through woods and trails to the Wainwright Memorial. The spectacular views and beautiful surroundings make it a perfect picnic stop. We then head for Billinge Hill viewpoint and descend the steps into Big Cover Wood to our destination at the Café & play area.

 Walk 2: Tuesday 10<sup>th</sup> August 10.45 am Darwen Station 

TRAIN TRIP & JUMBLES JAUNT

Meet at Darwen Station Platform 1 & catch 10:56 train to Bromley Cross for 11.08

We will walk from the station to Jumbles and take a clockwise walk around the reservoir following the woodland & park trails. This is an easy walk on good paths so trainers or wellies will be fine.

We will have a packed-lunch at the picnic area outside the café, with the option of ice-cream or refreshments. There are toilets here and a car-park if anyone wants to meet us here or be collected early. From here it is a mile back to the station & trains are every hour.

We will aim to catch the 15:11 return train arriving back in Darwen 15:24

Adult tickets: £3.90 & children under 15 £1.95

 Walk 3: Tuesday 24<sup>th</sup> August 10.15 am Darwen Station 

TRAIN TRIP - RIBBLE RAMBLE & CASTLE CLIMB

Meet at Darwen Station Platform 2 & catch 10.25 train to Clitheroe for 10.56

The day will include a 3-4 mile walk through Brungerley Park and along the banks of the river Ribble, plus a visit to Clitheroe Castle at the top of the hill, which is free apart from the museum. We will have a picnic lunch, a playground park adventure and the all-important café visit if required. Trains are every hour. We will aim to get the 16:25 train back from Clitheroe arriving back in Darwen 16.55.

Adult tickets £5.10 adult return & £2.55 for children under 15.